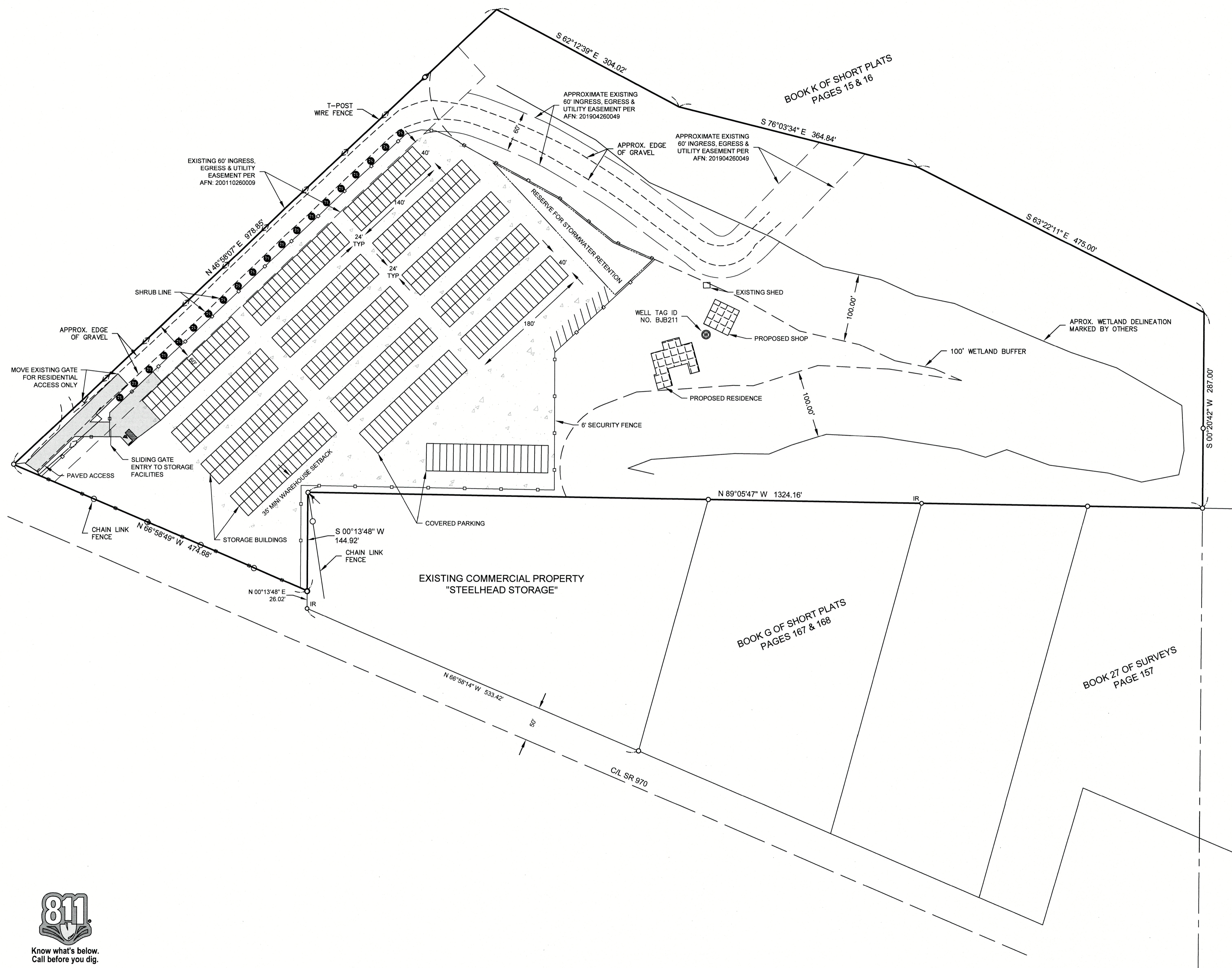
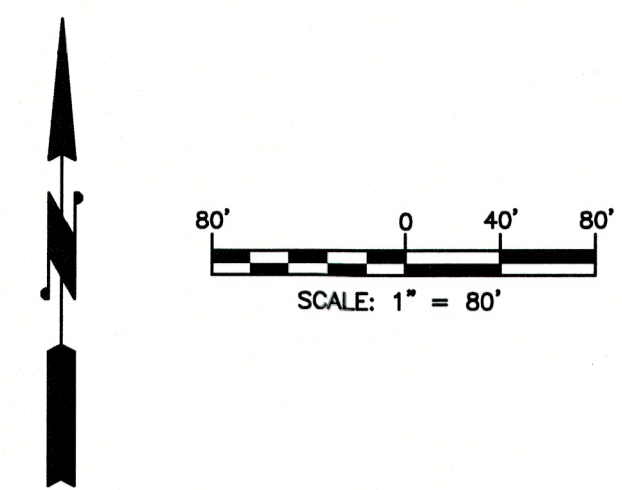


3581 SR 970

A PORTION OF THE E 1/2 OF THE SW 1/4 & A PORTION OF THE NW 1/4 OF THE SE 1/4 OF SECTION 32, T. 20 N., R. 16 E., W.M.
KITTITAS COUNTY, STATE OF WASHINGTON



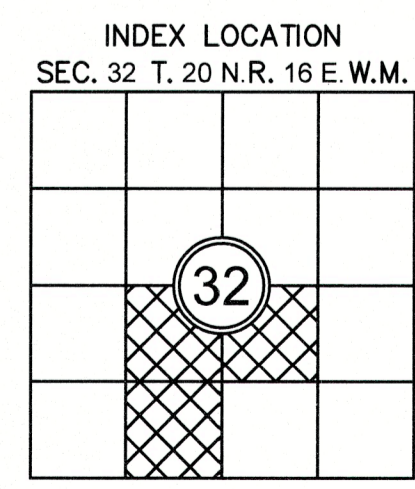
REVISIONS	BY	DATE

REVIEW DRAFT

WLC PROPERTY HOLDINGS LLC
SITE PLAN

Encompass
ENGINEERING & SURVEYING

Western Washington Division
165 NE Juniper Street, Suite 200
Eastern Washington Division
407 Southwater Blvd. • Co. Elm, WA 98922 • Phone: (509) 674-7433



JOB NO.	20182
DATE	
SCALE	
DESIGNED	
DRAWN	
CHECKED	
APPROVED	

SHEET



RECEIVED
DEC 21 2020
Kittitas Co. CDS